



ENVIRONMENT CONSERVATION/ GREEN INITIATIVE

**GOVERNMENT COLLEGE JAITHARI,
DISTRICT- ANUPPUR (M.P.) INDIA**

POLICY

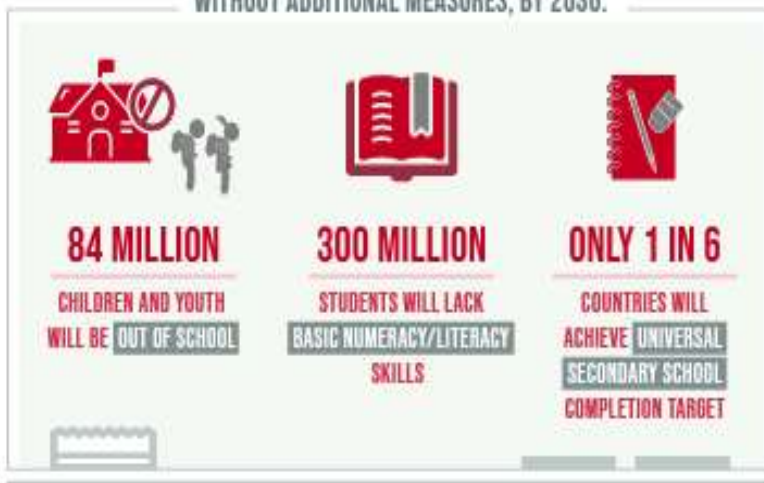


ENSURE INCLUSIVE AND EQUITABLE QUALITY EDUCATION AND PROMOTE LIFELONG LEARNING OPPORTUNITIES FOR ALL

DESPITE SLOW PROGRESS,

THE WORLD IS FALLING FAR BEHIND IN ACHIEVING QUALITY EDUCATION

WITHOUT ADDITIONAL MEASURES, BY 2030:



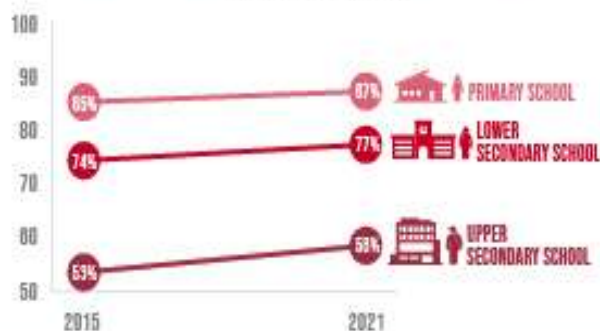
THE PANDEMIC

CAUSED LEARNING LOSSES IN **4 IN 5** OF 104 COUNTRIES STUDIED



PRIMARY AND SECONDARY SCHOOL COMPLETION RATES ARE **RIISING**, BUT THE PACE IS SLOW AND UNEVEN

COMPLETION RATES



LOW- AND LOWER-MIDDLE-INCOME COUNTRIES FACE A NEARLY

\$100 BILLION

ANNUAL FINANCING GAP TO REACH THEIR EDUCATION TARGETS



Mr. Ashok Kumar Rathour

Adhyaksh

Janbhagidari Samiti Govt. College Jaithari, Anuppur (M.P.)

Forward



Dear Esteemed Members of Government College Jaithari,

As the Adhyaksh of the Janbhagidari Samiti of Government College Jaithari, District Anuppur, Madhya Pradesh, it gives me immense pleasure to present this foreword to our comprehensive College Policy. Since our institution's establishment in 2012, we have been on a journey of growth, learning, and community engagement. This policy document marks another significant milestone in our college's development.

The Janbhagidari Samiti, or Public Participation Committee, plays a crucial role in bridging the gap between the college and the community. Our committee's vision aligns perfectly with the college's mission to provide quality education while fostering a sense of social responsibility among our students.

This College Policy is a testament to our collective efforts to create an institution that not only excels in academics but also prepares students to be responsible citizens. It encompasses various aspects of college life, from academic standards to community outreach programs, reflecting our commitment to holistic education.

I urge all stakeholders - students, faculty, staff, and community members - to embrace this policy wholeheartedly. It is through your active participation and adherence to these guidelines that we can truly realize the potential of our institution.

As we move forward, let us remember that the strength of our college lies in the spirit of 'Janbhagidari' - public participation. This policy is not just a document, but a shared vision for our college's future. Together, we can build an educational institution that serves as a beacon of knowledge and social progress in our region.

I look forward to your continued support and cooperation in implementing this policy and in furthering the growth of Government College Jaithari.

Sincerely,

**Mr. Ashok Kumar Rathour
Adhyaksh- Janbhagidari Samiti
Govt. College Jaithari
District Anuppur, (M.P.)**



Dr. Ramesh Singh Wate

Principal

Govt. College Jaithari, Anuppur (M.P.)

Forward



Dear Students, Faculty, and Staff,

As the Principal of Government College Jaithari, District Anuppur, Madhya Pradesh, it is my privilege to present our comprehensive College Policy. This document serves as a cornerstone for our institution, outlining our vision, mission, and the guiding principles that shape our academic environment.

Our college policy is designed to foster an atmosphere of academic excellence, personal growth, and social responsibility. It reflects our commitment to providing quality education while nurturing the diverse talents of our students. The policy encompasses various aspects of college life, including academic standards, code of conduct, extracurricular activities, and community engagement.

I encourage all members of our college community to familiarize themselves with this policy. It is not merely a set of rules, but a roadmap for our collective success. By adhering to these guidelines, we create a harmonious and productive learning environment that benefits everyone.

As we move forward, let us embrace these policies with enthusiasm and dedication. Together, we can build a college that not only imparts knowledge but also shapes responsible citizens who will contribute positively to society.

I look forward to working with all of you in upholding the high standards set forth in this policy and in continually striving for excellence in all our endeavors.

Sincerely,

Dr. Ramesh Singh Wate
Principal
Govt. College Jaithari
District-Anuppur (M.P.)

Govt. College Jaithari, Anuppur M.P.

Department of Higher Education M.P.

Environment Conservation/Green Initiative Policy

Introduction:

The Green Campus Policy of Govt. College Jaithari aims to create a sustainable and environmentally friendly campus that promotes ecological balance, conservation of resources, and the overall well-being of students, staff, and the community. This policy is designed to meet the requirements of the National Assessment and Accreditation Council (NAAC) and contribute to the global sustainability goals.

Energy Efficiency:

- a. Implement energy-efficient practices and technologies throughout the campus, such as LED lighting, motion sensors, and energy-efficient appliances, to reduce electricity consumption.
- b. Encourage the use of renewable energy sources, such as solar panels and wind turbines, to generate clean energy on campus.
- c. Conduct regular energy audits to identify areas for improvement and implement energy-saving measures accordingly.

Water Conservation:

- a. Promote water conservation practices by installing low-flow fixtures, dual-flush toilets, and rainwater harvesting systems.
- b. Raise awareness among students and staff about the importance of water conservation through campaigns, workshops, and educational programs.
- c. Regularly monitor water usage and implement strategies to minimize wastage and promote efficient water management.

Waste Management:

- a. Establish a comprehensive waste management system that includes recycling, composting, and proper disposal of hazardous waste.
- b. Install recycling bins throughout the campus and encourage students and staff to recycle paper, plastic, glass, and other recyclable materials.

- c. Conduct awareness programs to promote waste reduction, reuse, and segregation practices.

Green Transportation:

- a. Encourage the use of eco-friendly transportation options such as bicycles, electric vehicles, and carpooling among students and staff.
- b. Develop designated parking spaces for bicycles and electric vehicles, along with charging infrastructure for electric vehicles.
- c. Collaborate with local transport authorities to improve public transportation accessibility to the campus.

Green Spaces and Biodiversity:

- a. Create and maintain green spaces, gardens, and arboretums on the campus to enhance biodiversity and provide recreational areas for students and staff.
- b. Adopt sustainable landscaping practices, including native plant species, rain gardens, and organic gardening techniques.
- c. Foster awareness about the importance of biodiversity and sustainable ecosystems through educational programs and nature conservation initiatives.

Environmental Education and Research:

- a. Integrate environmental education into the curriculum across various disciplines to enhance students' understanding of sustainability and ecological issues.
- b. Encourage faculty and students to engage in research related to environmental sustainability, renewable energy, and climate change.
- c. Organize seminars, workshops, and conferences on sustainability topics, inviting experts and researchers to share their knowledge and insights.

Green Procurement:

- a. Promote environmentally responsible procurement practices by giving preference to products and services that are eco-friendly, energy-efficient, and have minimal environmental impact.
- b. Collaborate with local and regional suppliers who adhere to sustainable practices and provide environmentally friendly products and services.
- c. Implement a policy that encourages the reduction of paper usage and the adoption of digital alternatives wherever feasible.

Stakeholder Engagement:

- a. Encourage active participation and involvement of students, staff, and the local community in sustainability initiatives through student clubs, committees, and volunteer programs.
- b. Conduct regular meetings, surveys, and feedback sessions to gather suggestions and ideas from stakeholders for improving the effectiveness of the Green Campus Policy.
- c. Recognize and appreciate individuals and groups for their contributions towards sustainability and environmental conservation.

Implementation and Monitoring:

- a. Develop a Green Campus Committee comprising representatives from various departments and stakeholders to oversee the implementation and monitoring of the policy.
- b. Establish a system for regular monitoring, evaluation, and reporting of the progress made in achieving sustainability goals and targets.
- c. Periodically review and update the Green Campus Policy to align.

Prepared By:- Mr. Radheshyam Solanki

Verified By:- Dr. Jeetendra Singh Dhurve

**Coordinator IQAC
Govt. College Jaithari**

**Principal
Govt. College Jaithari
Anuppur (M.P.) 484330**